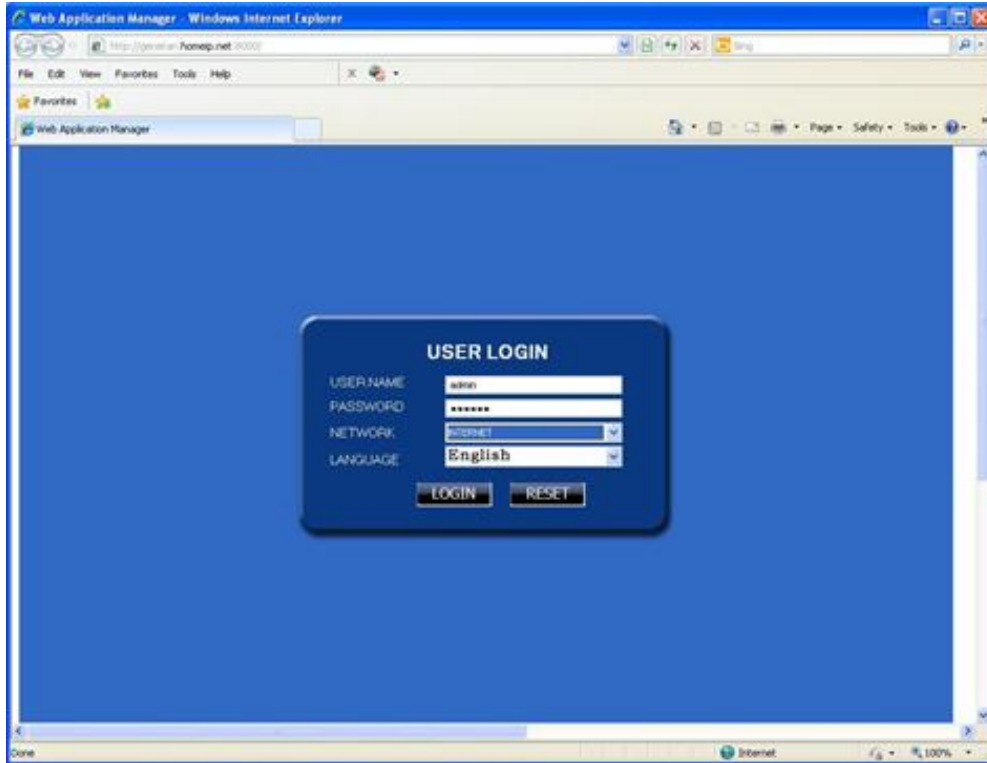
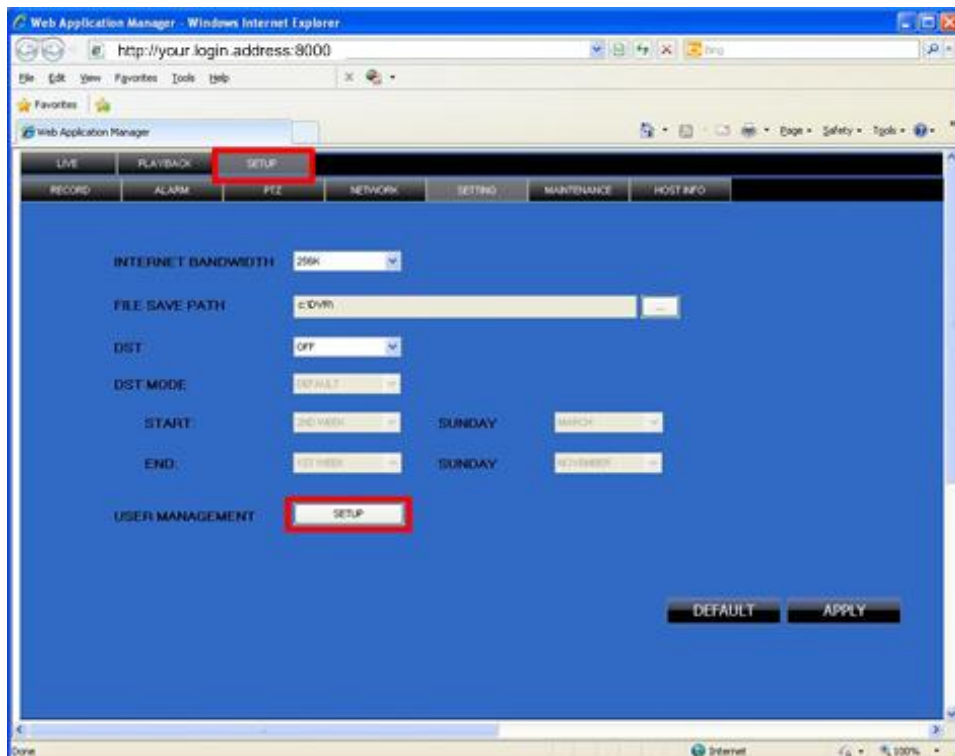


Login or Change Password
Access from Computer (IE)

1. Log in to <http://your.login.address:8000> using IE



2. Click on Setup - Setting - Setup



Change Password
Access from Computer (IE)

3. You can change the admin password or create an account

The screenshot displays the 'USER MANAGEMENT' web interface. At the top, there is a blue header with the title 'USER MANAGEMENT' and a close button. Below the header, the interface is divided into several sections:

- User Management:** A grid of user accounts. The first row shows an 'ADMINISTRATOR' user named 'admin' with a masked password and an 'ACTIVE' checkbox. To its right are two 'NORMAL USER' entries: 'user3' and 'user4', both with empty password fields and 'ACTIVE' checkboxes.
- Normal Users:** The second row shows 'NORMAL USER' entries for 'user1' and 'user2', both with empty password fields and 'ACTIVE' checkboxes.
- Normal Users:** The third row shows 'NORMAL USER' entries for 'user2' and 'user5', both with empty password fields and 'ACTIVE' checkboxes.

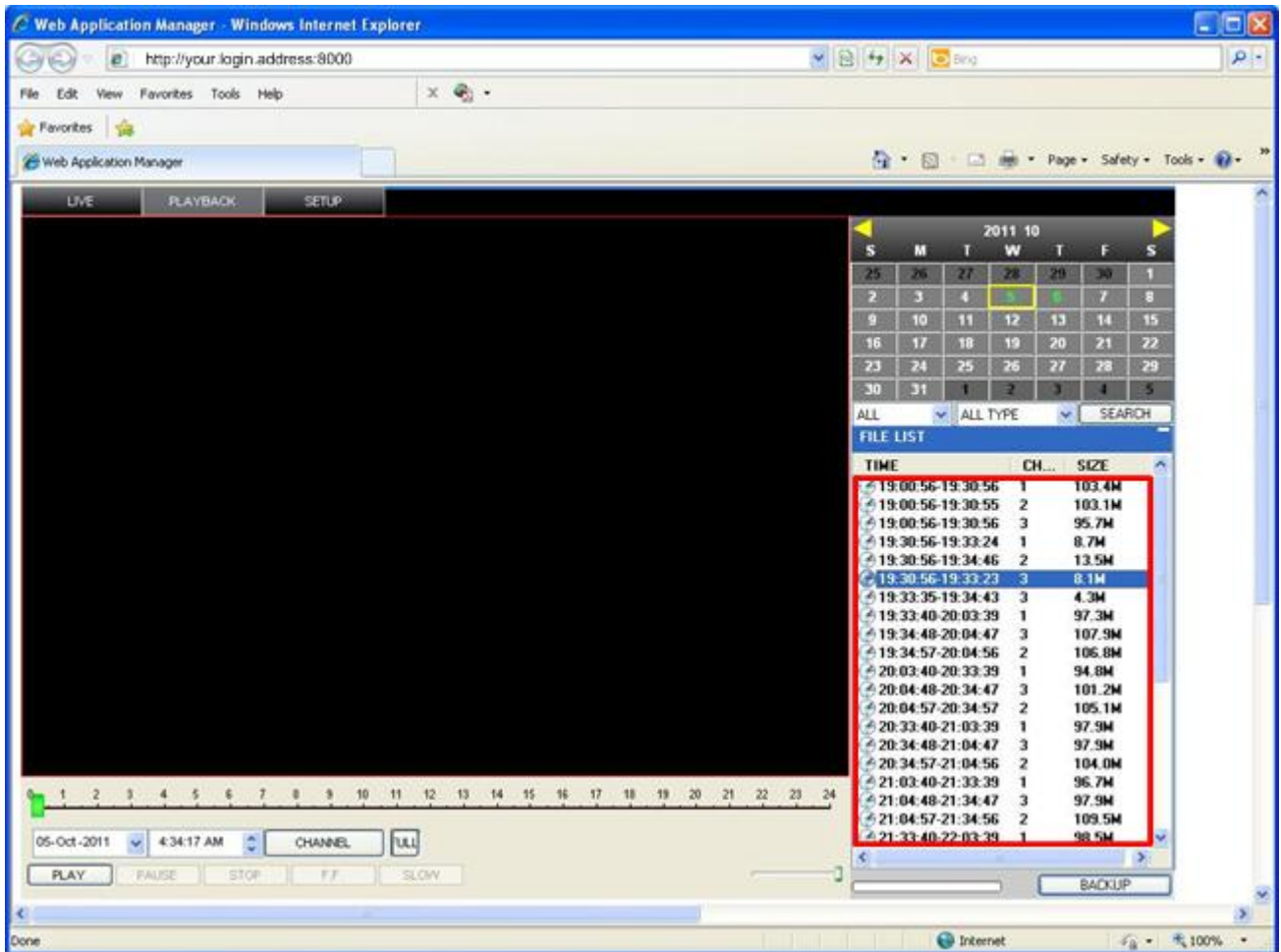
Below the user list, there are three main sections:

- LIVE:** Contains four checked checkboxes for 'CH1', 'CH2', 'CH3', and 'CH4'. To the right are 'CLEAR' and 'ALL' buttons.
- PLAYBACK:** Contains four checked checkboxes for 'CH1', 'CH2', 'CH3', and 'CH4'. To the right are 'CLEAR' and 'ALL' buttons.
- OTHER SETTINGS:** A grid of 12 checked checkboxes: 'STANDBY', 'RECORD SETUP', 'HDD MANAGE', 'LANGUAGE SETUP', 'TIME SETUP', 'START/STOP REC', 'DISPLAY SETUP', 'ALARM SETUP', 'SYSTEM INFO', 'MOTION DETECT', 'MOBILE SETUP', and 'SYSTEM SETUP'. To the right are 'CLEAR' and 'ALL' buttons.

At the bottom of the interface, there are three buttons: 'RESET', 'CONFIRM', and 'EXIT'.

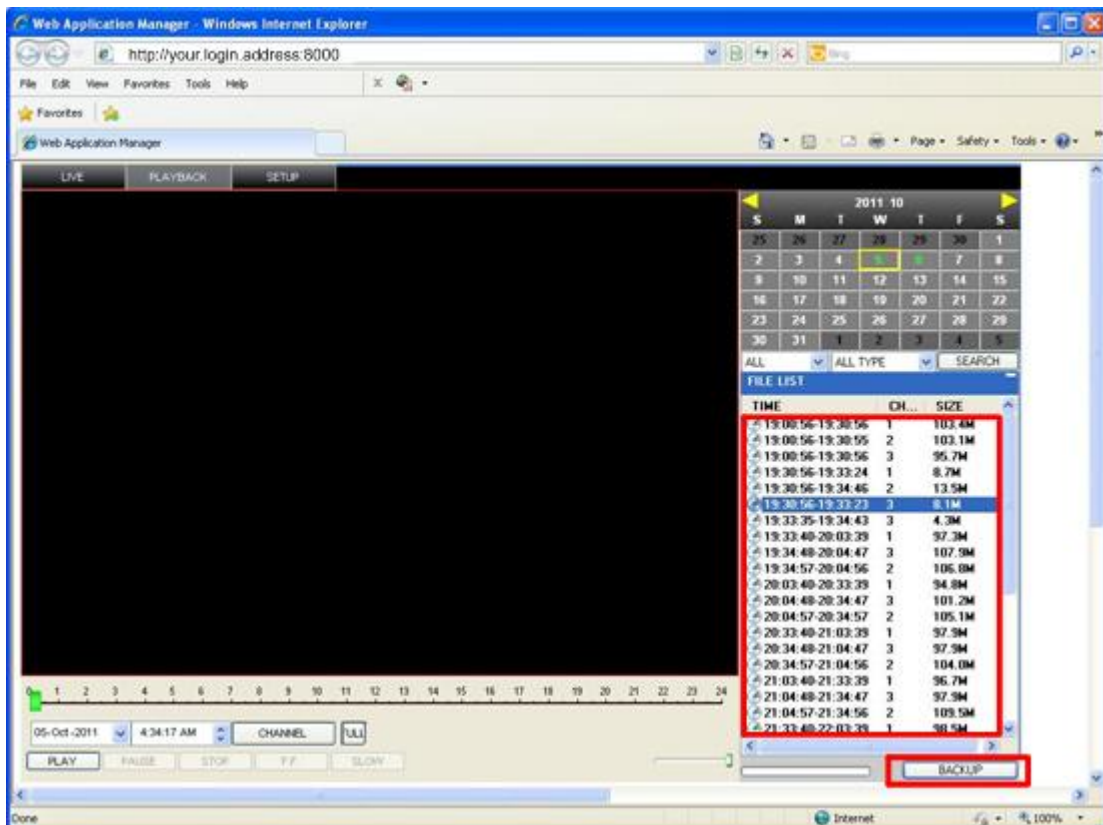
Playback from Computer

1. Click on Playback - Select the file - Double Click



Backup from Computer

1. Click on Playback - Select the file - Click on Backup



2. The backup file will located in C:folder
3. Play the file using Playback Player

